

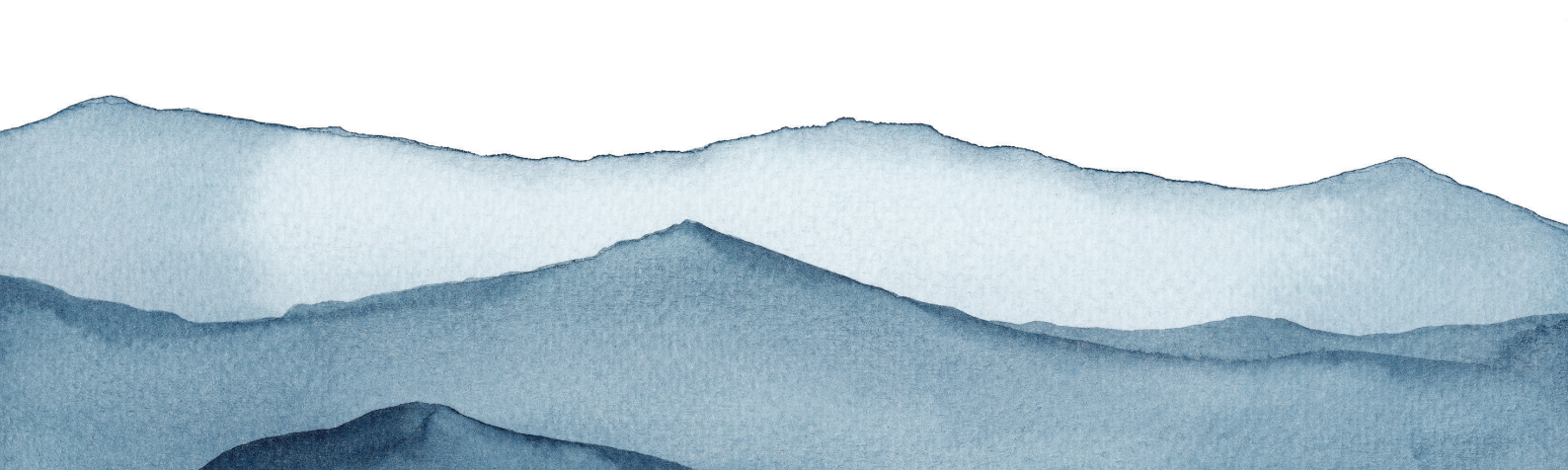
M3 SM30 X | W

Rugged Full-Touch Mobile Handheld Computer with Qualcomm Dragonwing™ QCM6490



- **Android 14 GMS (support up to 18)**
- **Qualcomm Dragonwing™ QCM6490 high-performance 2.7 GHz Octa-core**
- **5G / Wi-Fi 6E (802.11ax)**
- **Bluetooth 5.3 BLE, Class 2. BLE for Beacons**
- **IP68 / MIL-STD-810G**

The SM30 is equipped with the Qualcomm Dragonwing™ QCM6490 processor, delivering high-performance data processing at speeds of up to 2.7GHz. It also features AI-based image analysis and high-speed barcode scanning, significantly enhancing workplace efficiency and performance. Designed for seamless operation, the SM30 ensures stable performance and maximizes productivity across various work environments. Additionally, it supports Android 14 through the upcoming Android 18, ensuring long-term software compatibility and regular security updates. With advanced wireless connectivity, enhanced security features, and AI & IoT optimizations, the SM30 maximizes operational efficiency and guarantees long-term device longevity.



High-Speed & Stable Data Processing

The SM30 supports Wi-Fi 6E (802.11ax) with a maximum speed of 9.6Gbps, providing 40% faster wireless network performance compared to Wi-Fi 5 (802.11ac). It minimizes speed degradation even when multiple devices transmit data simultaneously and prevents network interference in multi-AP environments. In non-Wi-Fi environments, it supports 2G to 5G networks, enabling ultra-fast data upload and download, while ensuring stable connectivity even with multiple device connection

Beacon & Bluetooth 5.3 for Seamless Tracking and Enhanced Security

The SM30 is equipped with Beacon technology for automatic tracking of products, equipment, and vehicles, supports real-time inventory management and logistics tracking even without Wi-Fi or GPS, and enhances security and connectivity with Bluetooth 5.3, featuring Bluetooth Low Energy SDK, SoC and module-based Bluetooth chip, and the world's first PSA Level 3 security-certified hardware.

Enhanced Work Environment with AI

Powered by AI capable of 12 trillion operations per second, the SM30 enhances barcode and QR code scanning speed and automatically corrects or removes noise from damaged or blurry barcodes for quick recognition. It also detects and categorizes defective products and parts in real time. Since AI processing is performed on the PDA itself, AI functions can be used without an internet connection or cloud server.

All-Day Long Battery Life

The SM30 offers a standard 5,000mAh battery and an optional 7,000mAh battery, allowing 12 to 24 hours of continuous use on a single charge. Even when utilizing high-performance AI and wireless functions, it eliminates the need for frequent battery swaps, reducing downtime and cutting costs on extra batteries and chargers.

Exceptional Durability, Reliable Performance in Extreme Environments

This industrial PDA boasts an IP68 rating for water and dust resistance, and is certified with the MIL-STD-810G military standard, ensuring exceptional durability even in extreme conditions. It delivers stable performance in harsh working environments, such as rain, dust, and shock, maximizing operational efficiency in the field.

Best application solution, M3 SPEEDPACK

M3 SPEEDPACK and its application solutions are developed by M3 Mobile to provide comprehensive device management. With this solution, you can fully control your devices. If you use the StartUP tool within M3 SPEEDPACK, you can scan a few barcodes via your PC and device, enabling the customization and setup of thousands of devices simultaneously.

Moreover, StartUP is a web-based tool that operates seamlessly through a browser, regardless of location or device model. This allows for remote configuration and management, making deployment more flexible and efficient. Additionally, productivity and efficiency can be enhanced through various application tools.

Specification

Physical Characteristics	
Dimensions	161.64 x 78.5 x 17.5 mm
Weight	297 g
Display	5.5 inch FHD (1080 x 1920)
Touchpanel	Corning® Gorilla® 5 Glass touch panel with air gap; supports dual input mode with finger, gloved finger and stylus (conductive stylus sold separately)
Backlight	LED backlight display
Expansion Slot	User accessible microSD card supports up to 2 TB
SIM Slots (X model only)	1 Nano SIM and 1 eSIM
Network Connections	USB 3.1 High Speed OTG (host/client); Type C connector
Notification	Audible tone, multi-color LEDs, vibration
Keypad	4 PHYSICAL BUTTON ON THE BOTTOM 5 PROGRAMABLE SIDE SCAN KEYS + PW BUTTON
Voice	Internal speaker, Two microphone with noise cancellation; vibrate alert and Bluetooth wireless headset support; High quality speaker phone;
Audio	Built-in speaker and microphone
Performance Characteristics	
CPU	2.7 GHz Octa-core processor Qualcomm Dragonwing™ QCM6490
Operating System	Android 14(Up to Android 18) with M3 Mobile's StartUp for control over GMS and other services; will support future Android releases committed support for Android 15, 16, 17 and 18, pending feasibility.
Memory	DDR4 8GB/128GB UFS Flash
Power	All models ship with rechargeable Li-Ion, 3.8V, 5,000mAh smart battery, hot swap support with temporary WWAN/ WLAN/Bluetooth session persistence, 7,000mAh Extended batteries(optional)
User Environment	
Operating Temp.	-20°C to 50°C(-4°F to 122°F)
Storage Temp.	-30°C to 80°C(-22°F to 176°F)
Humidity	5% to 95% RH (Non-condensing)
Drop Specifications	1.5m (-10°C to 50°C, without boots) 1.8m (-20°C to 50°C, with boots) drops to concrete across the operating temperature range per MIL-STD-810
Tumble Specification	1,000 1.6ft. /0.5 m tumbles; without boots 1,000 3.2ft. /1 m tumbles; with boots
Sealing	IP68

Vibration	Sine: 4g's peak, 5hz to 2khz, Random: .04g ² /hz, 20hz to 2khz
Thermal Shock	-30° C to 70° C rapid transition
Electrostatic Discharge (ESD)	+/- 15kV air, +/-8kV contact discharge +/-8kV indirect contact discharge
Interactive Sensor Technology (IST)	
Light Sensor	Automatically adjusts the brightness of the display
Magnetometer sensor	eCompass automatically detects direction and orientation
Motion Sensors	Gyro Sensor, Accelerometers: for X,Y, and Z movement, and gyroscopes for measuring the extent and rate of rotation in space
Proximity Sensor	Detect the presence of nearby objects without any physical contact, during a telephone call, proximity sensors play a role in detecting accidental touchscreen taps
Data Capture	
Scanning	SE4770, SE55, SE4710
Rear Camera	Front CAM : 8M pixels, Rear CAM : 16 M pixels auto-focus (PDAF)
NFC	ISO 14443 Type A and B; FeliCa and ISO 15693 cards; Card Emulation via Host
Wireless WAN Data AND VOICE COMMUNICATIONS (X model only)	
Radio Frequency Band	5G FR1: n1/2/3/5/7/8/20/28/38/40/41/66/71/77/78; 4G: B1/2/3/4/5/7/8/13/17/20/28/38/39/40/41/42/43/66/71; 3G: 1/2/4/5/8 2G: 850, 900, 1800, 1900
GPS	GPS, GLONASS, Galileo, Beidou, QZSS Dual-Band GNSS—concurrent L1/G1/E1/B1 (GPS/ QZSS, GLO, GAL, BeiDou) + L5/E5a/BDSB2a (GPS/ QZSS, GAL, BeiDou); a-GPS; supports XTRA
Wireless LAN	
Radio	IEEE 802.11 a/b/g/n/ac/d/h/i/r/k/v/w/mc/ax; 2x2 MU-MIMO; Wi-Fi 6E (802.11ax); Wi-Fi 6E Certified; Dual Band Simultaneous; IPv4, IPv6
Operating Channels (depending on Regulatory)	Channel 1-13 (2412-2472 MHz): 1,2,3,4,5,6,7,8,9,10,11,12,13 Channel 36-165 (5180-5825 MHz): 36,40,44,48,52 56,60,64,100,104,108,112,116,120,124,128,132,136,140,144,149,153,157,161,165 Channel Bandwidth: 20, 40, 80 MHz Actual operating channels/ frequencies and bandwidths depend on regulatory rules and certification agency.
Security and Encryption	WEP (40 or 104 bit); WPA/WPA2 Personal (TKIP, and AES); WPA3 Personal (SAE); WPA/WPA2 Enterprise (TKIP and AES); WPA3 Enterprise (AES) – EAP-TTLS (PAP, MSCHAP, MSCHAPv2), EAP-TLS, PEAPv0-MSCHAPv2, PEAPv1-EAP-GTC, LEAP and EAP-PWD; WPA3 Enterprise 192-bit Mode (GCMP256) – EAP-TLS; Enhanced Open (OWE)
Fast Roam	PMKID caching; Cisco CCKM; 802.11r; OKC
Wireless PAN	
Bluetooth	Bluetooth 5.3 BLE, Class 2 BLE for beaconing

Regulatory

EMI/EMC EN 301 489-1; EN 301 489-3; EN 55024; EN 55032 Class A

Electrical Safety IEC 62368-1, EN 62368-1

RF Exposure EU: EN 50364, EN 62369-1, EN 50566, EN 62311

Environmental Compliance

Directive 2011/65/EU, Directive(EU)2015/863

Warranty

Subject to the terms of M3 Mobile's hardware warranty statement, the SM30 series are warranted against defects in workmanship and materials for a period of 1 (one) year from the date of shipment. For complete warranty statement.

Recommended Services

M3 Mobile speed care Essential and Select: Maximize M3 Mobile device availability, device value and operational efficiency with these fully-featured support services that set the industry bar for support.

Footnotes

Feature available Q2 2025

M3 Speedpack

"M3 Speedpack solutions help you get more value out of our mobile computers by adding functionality as well as simplifying deployment and management of our mobile devices. For more information on these M3 Mobile-only feature."

Application user manual / Startup PC for SOTI / Startup PC User Manual

<http://www.m3mobile.net/en/products/solution-support/m3-speedpack>

M3 Speedpack is available on Android only. Features may vary by model and a Support Contract may be required.

Service Center

M3mobile Korea
Chun-ui Techno Park 201-610, 202, Chunui-dong, Wonmi-gu, Bucheon,
Gyeonggi-do, 420-857, Korea Tel: +82 32 623 0037 Fax: +82 70 4015 6323

M3mobile Germany
Am Holzweg 26, 65830 Kriftel, Germany
Tel : +49 6192 9222 150

Web site <http://itc.m3mobile.net>
E-mail Information Technology Team: it@m3mobile.co.kr
Customer Service Team: cs@m3mobile.co.kr

Accessories

(Appearance can be changed.)



2 slot charging



4 slot charging /
ethernet

Head Office
Tel: +82 2 574 0037
Fax: +82 2 558 1253
www.m3mobile.net,
sales@m3mobile.co.kr
sales_kr@m3mobile.co.kr

German Office
Tel +49 61929222148
sales_eu@m3mobile.net

France Office
Mobile +33-(0)686550492
sales_eu@m3mobile.net

UK Office
Tel +49 61929222148
sales_eu@m3mobile.net

Spain Office
Mobile +49 61929222148
sales_eu@m3mobile.net

Turkey Office
Tel +90 070-4801-0358
Mobile +90 533 049 41 30
sales@m3mobile.co.kr